

URBAN LIVING PARK

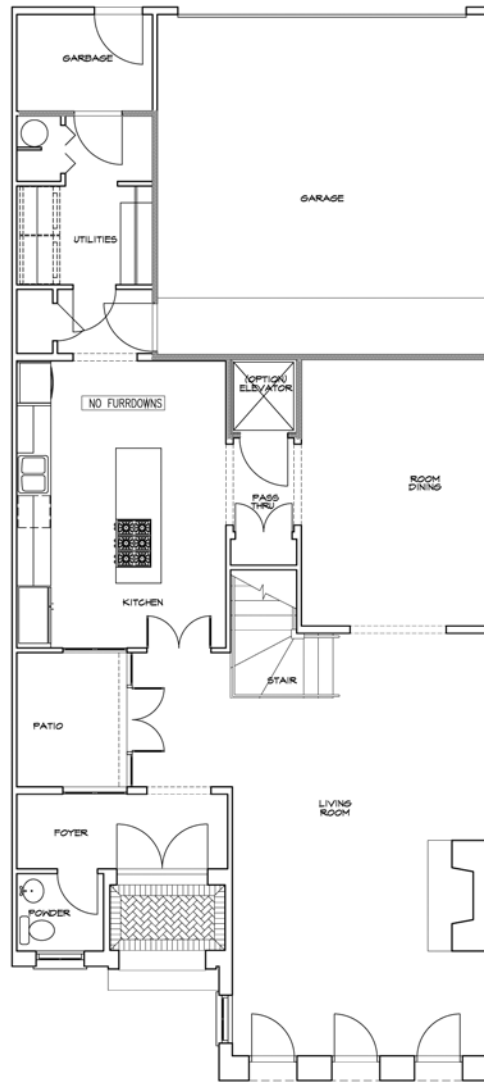
on the

TOWNHOMES AT So7

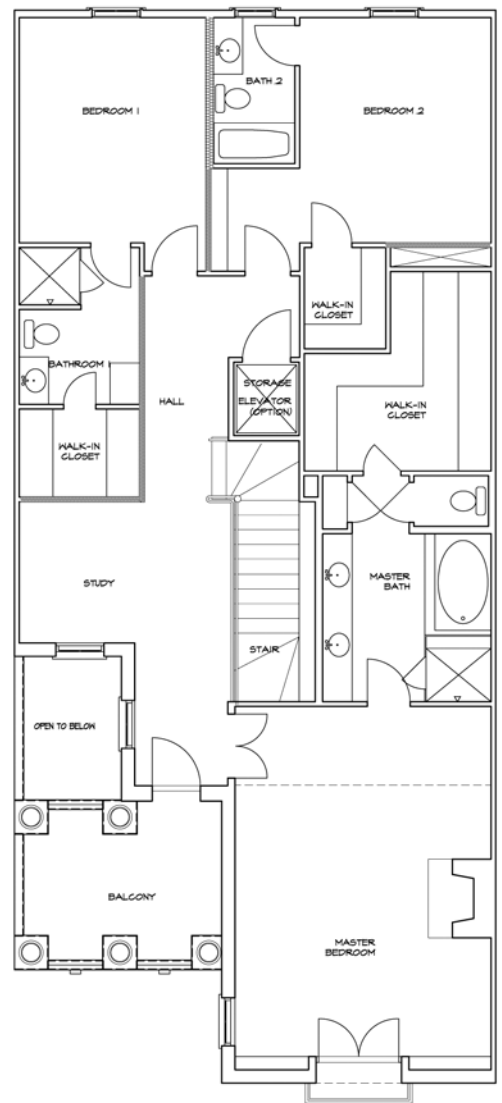
Plan B

3 BEDROOMS, 3.5 BATHROOMS
APPROX. 2,856 SF

FIRST FLOOR



SECOND FLOOR



Plan B



These exhibits are for general information only and are subject to change at seller's discretion. Floor plans are not to scale. All designs, presentation materials, fixtures, dimensions, and area representations are approximate and must be field verified or measured for final reliance. The seller reserves the right to modify floor plans, features, prices, materials, and designs without notice. The approximate square footage, as stated above is the gross building area of air-conditioned space.



urban living on the park.

817-885-7700 / SOSEVENFORTWORTH.COM



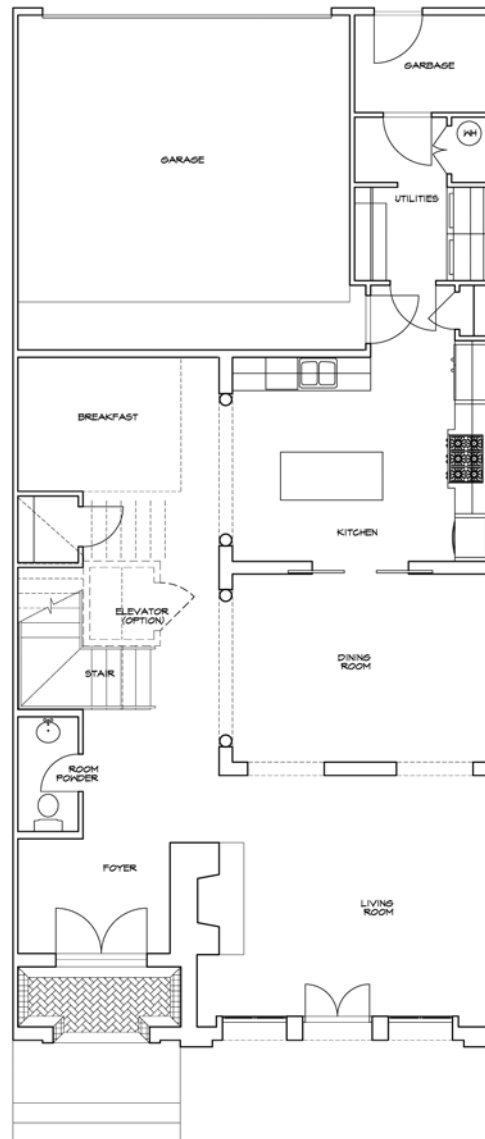
TOWNHOMES AT So7

Plan D

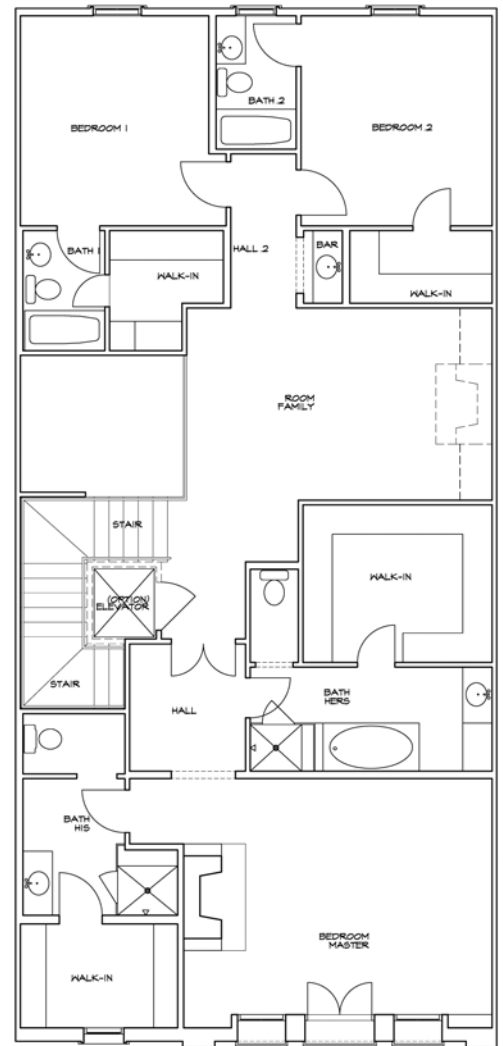
3 BEDROOMS, 4.5 BATHROOMS
APPROX. 3,016 SF



FIRST FLOOR



SECOND FLOOR



Plan D



These exhibits are for general information only and are subject to change at seller's discretion. Floor plans are not to scale. All designs, presentation materials, fixtures, dimensions, and area representations are approximate and must be field verified or measured for final reliance. The seller reserves the right to modify floor plans, features, prices, materials, and designs without notice. The approximate square footage, as stated above is the gross building area of air-conditioned space.



urban living on the park.

817-885-7700 / SOSEVENFORTWORTH.COM